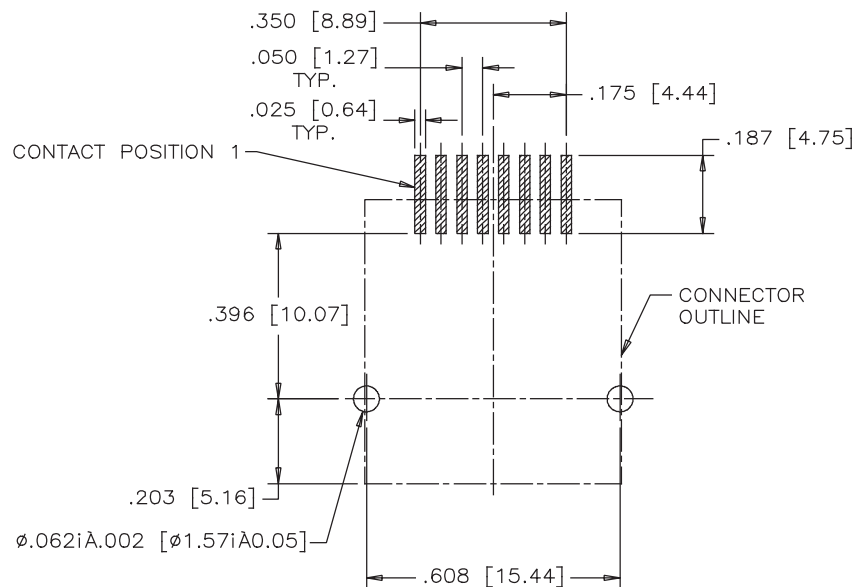
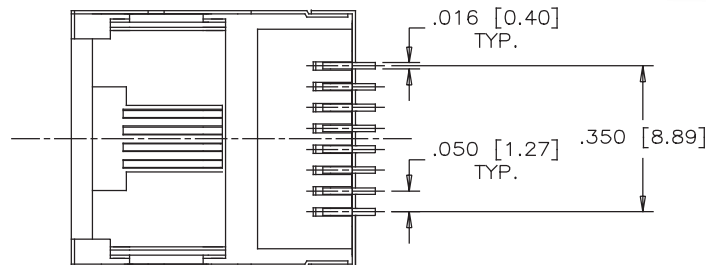


| REVISIONS | | | |
|-----------|------|--------------------------|-----------|
| SYM | ZONE | ECN, ERN NO. | DATE |
| A | | PROPOSAL | MAY 8/08 |
| B | | FIX THE PACKING QUANTITY | MAR 13/13 |



NOTES:

1. MATERIALS:

- HOUSING: HIGH TEMPERATURE RESISTANT NYLON.
FLAMMABILITY RATING UL 94V-0
COLOUR: BLACK
- CONTACTS: PHOSPHOR BRONZE
- PLATING: GOLD PLATED REFER TO PART NUMBER ON MATING SURFACES.
50 U" [1.27 MICRONS] MIN. NICKEL UNDERPLATE.
100 U" [2.54 MICRONS] MIN. MATTE-TIN ON CONTACT TAILS.
- SHIELD: COPPER ALLOY, NICKEL PLATED WITH PURE-TIN DIPPED ON SOLDER TAIL

2. COPLANARITY SPECIFICATION:

WITH THE MODULAR JACK SITTING ON A LEVEL SURFACE, THE MAXIMUM GAP BETWEEN THE LEVEL SURFACE AND ALL TERMINAL TAILS AND BOTH FITTING NAILS IS .004 [0.10].

AMPHENOL PART NO.: RJLSE-4X381-01T

GOLD PLATING

- 0 = 06 u"
1 = 15 u"
2 = 30 u"
3 = 50 u"

RECOMMENDED P.C.B. LAYOUT
(COMPONENT SIDE OF BOARD)

| | | | |
|-------------------|--------------|------|----------|
| DRAWN | J.OUYANG | DATE | MAY 8/08 |
| DESIGNED | MT.CHAN | DATE | MAY 8/08 |
| CHECKED | L.CHAN | DATE | MAY 8/08 |
| I. E. APPRD. | | | |
| Q. A. APPRD. | | | |
| DWG. APPRD. | | | |
| ENG. REL. NO. | | | |
| REF. | | | |
| DIMENSIONS ARE IN | CODE ID. NO. | | |
| INCHES [mm] | 03554 | | |

Amphenol Canada Corp.

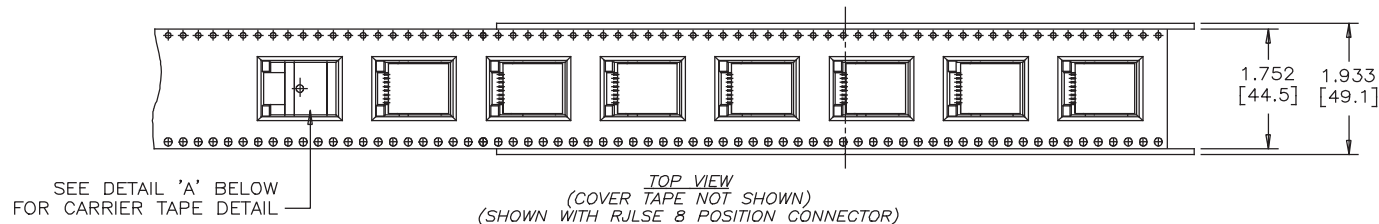
TITLE SURFACE MOUNT MODULAR JACK ,8 POSITION,
8 CONTACTS, WITH SHIELD,WITH TAPE
& REEL PACKAGING-ROHS COMPLIANT

| | | |
|-------|-------------------|--------------|
| DWG | DRAWING NO. | REV. |
| | P-RJLSE-4X381-01T | B |
| SCALE | WT. | SURF. |
| | | SHEET 1 OF 2 |

THIS DOCUMENT CONTAINS PROPRIETARY INFORMATION AND SUCH INFORMATION
MAY NOT BE DISCLOSED TO OTHERS FOR ANY PURPOSE OR USED FOR MANUFACTURING
PURPOSES WITHOUT WRITTEN PERMISSION FROM AMPHENOL CANADA CORP.

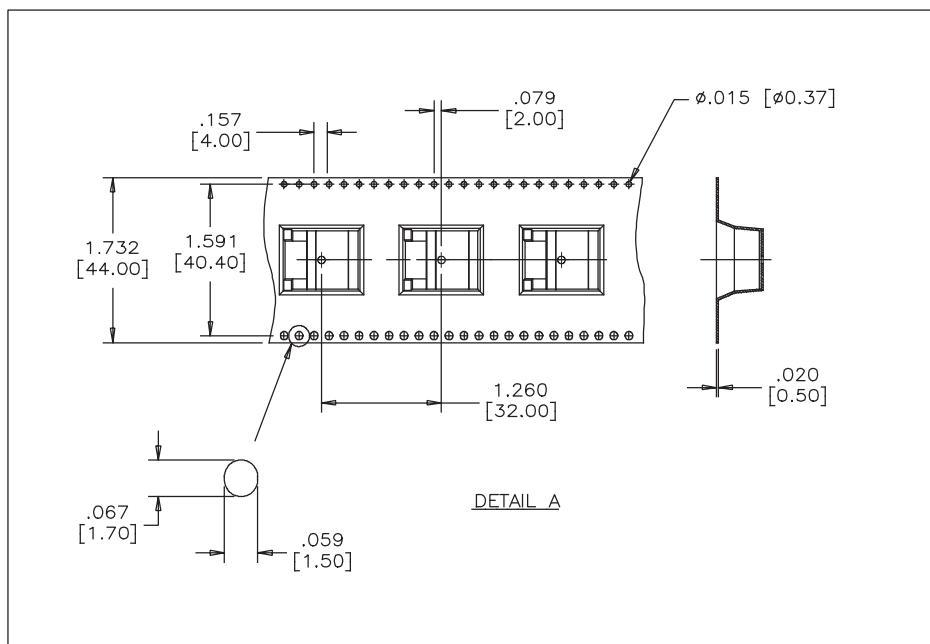
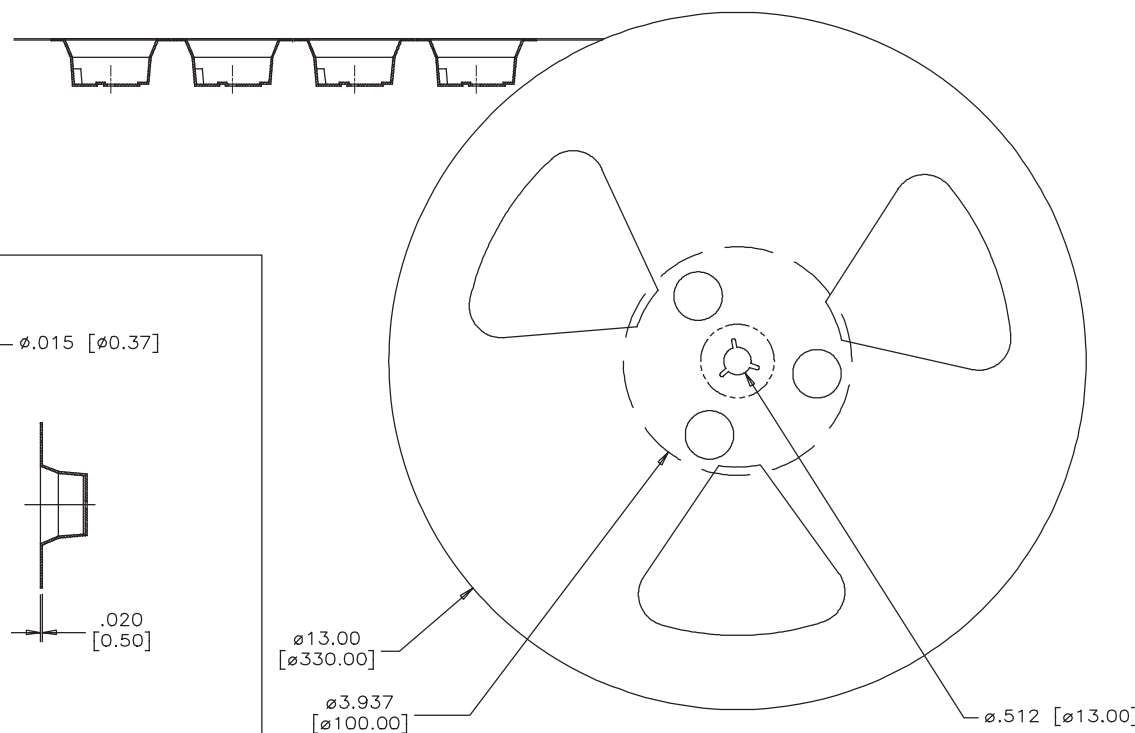


← DIRECTION OF CONNECTOR LOADED INTO MACHINE.
LEADS FACING FRONT SIDE



PACKAGING NOTES:

1. ONE REEL SHOULD HOLD 100 CONNECTORS.
2. 25 EMPTY CAVITIES FOR CARRIER TAPE LEADER & 10 EMPTY CAVITIES FOR CARRIER TAPE TRAILER.
3. A FULLY LOADED CARTON SHOULD CONTAIN 5 REELS (500 PCS) OF CONNECTORS.



| | | | |
|-------------------|--------------|------|----------|
| DRAWN | J.OUYANG | DATE | MAY 8/08 |
| DESIGNED | MT.CHAN | | MAY 8/08 |
| CHECKED | L.CHAN | | MAY 8/08 |
| I. E. APPRD. | | | |
| Q. A. APPRD. | | | |
| DWG. APPRD. | | | |
| ENG. REL. NO. | | | |
| REF. | | | |
| DIMENSIONS ARE IN | CODE ID. NO. | | |
| INCHES [mm] | 03554 | | |

| | | | |
|-----------------------|---|-----|--------------|
| Amphenol Canada Corp. | | | |
| TITLE | SURFACE MOUNT MODULAR JACK ,8 POSITION, 8 CONTACTS, WITH SHIELD,WITH TAPE & REEL PACKAGING-ROHS COMPLIANT | | |
| DWG | DRAWING NO. | | REV. |
| | P-RJLSE-4X381-01T | | B |
| SCALE | NTS | WT. | SHEET 2 OF 2 |

THIS DOCUMENT CONTAINS PROPRIETARY INFORMATION AND SUCH INFORMATION
MAY NOT BE DISCLOSED TO OTHERS FOR ANY PURPOSE OR USED FOR MANUFACTURING
PURPOSES WITHOUT WRITTEN PERMISSION FROM AMPHENOL CANADA CORP.